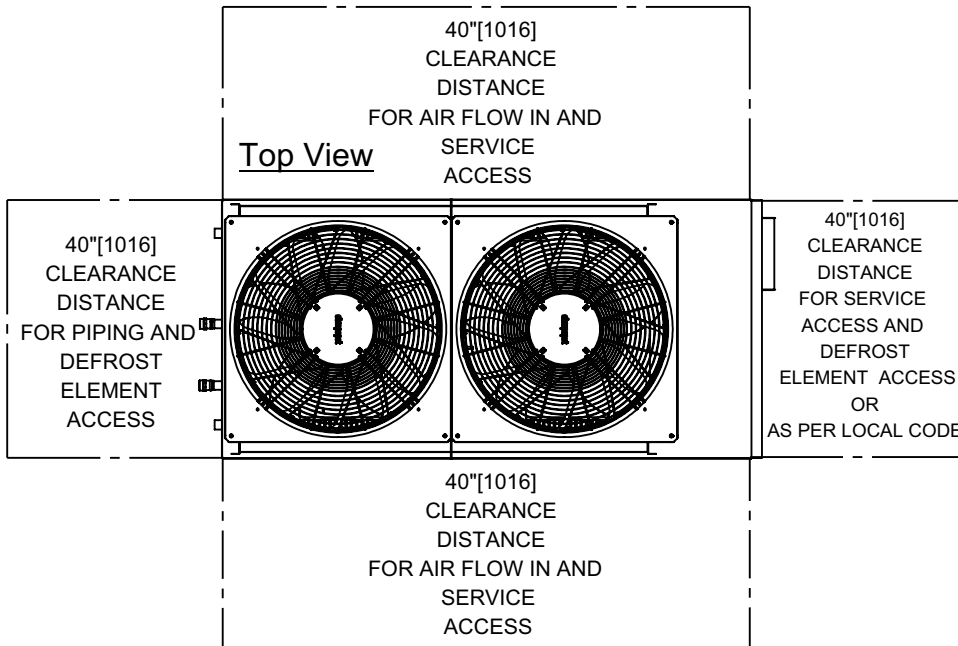
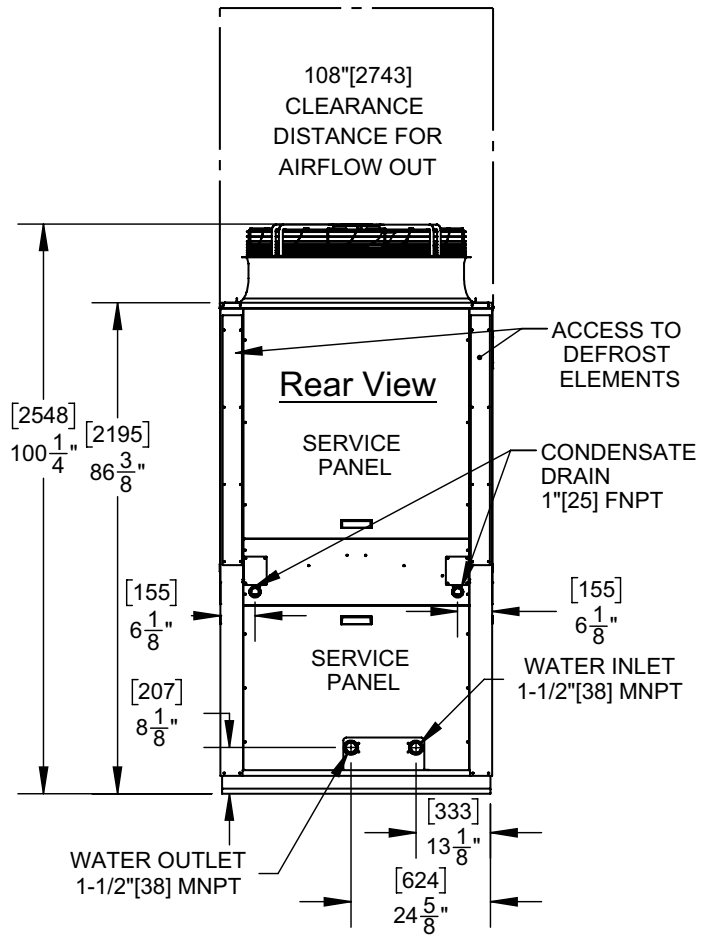
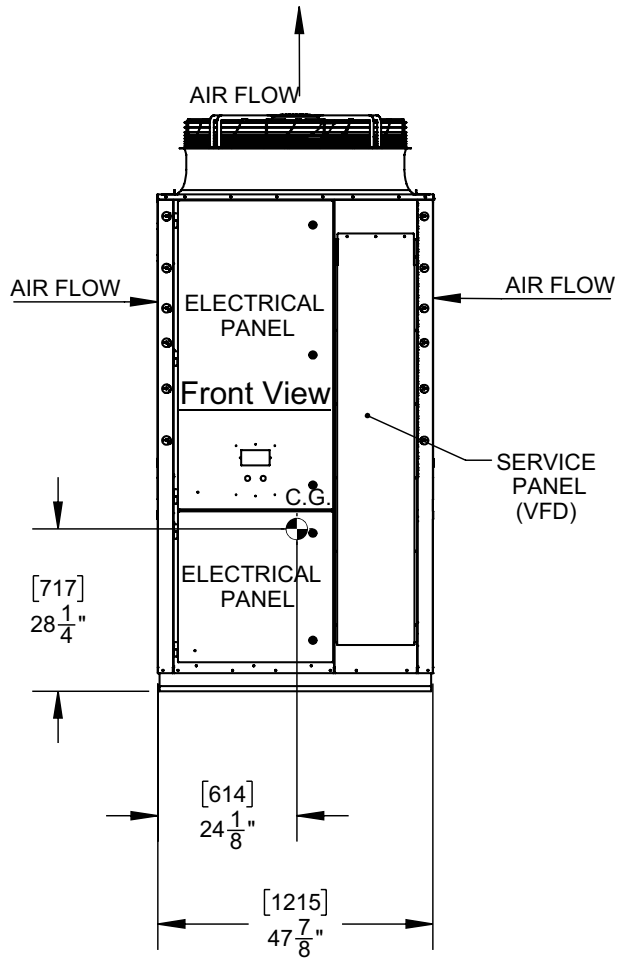


# SIMCOE 700 HEAT PUMP

SD-SIM700-1

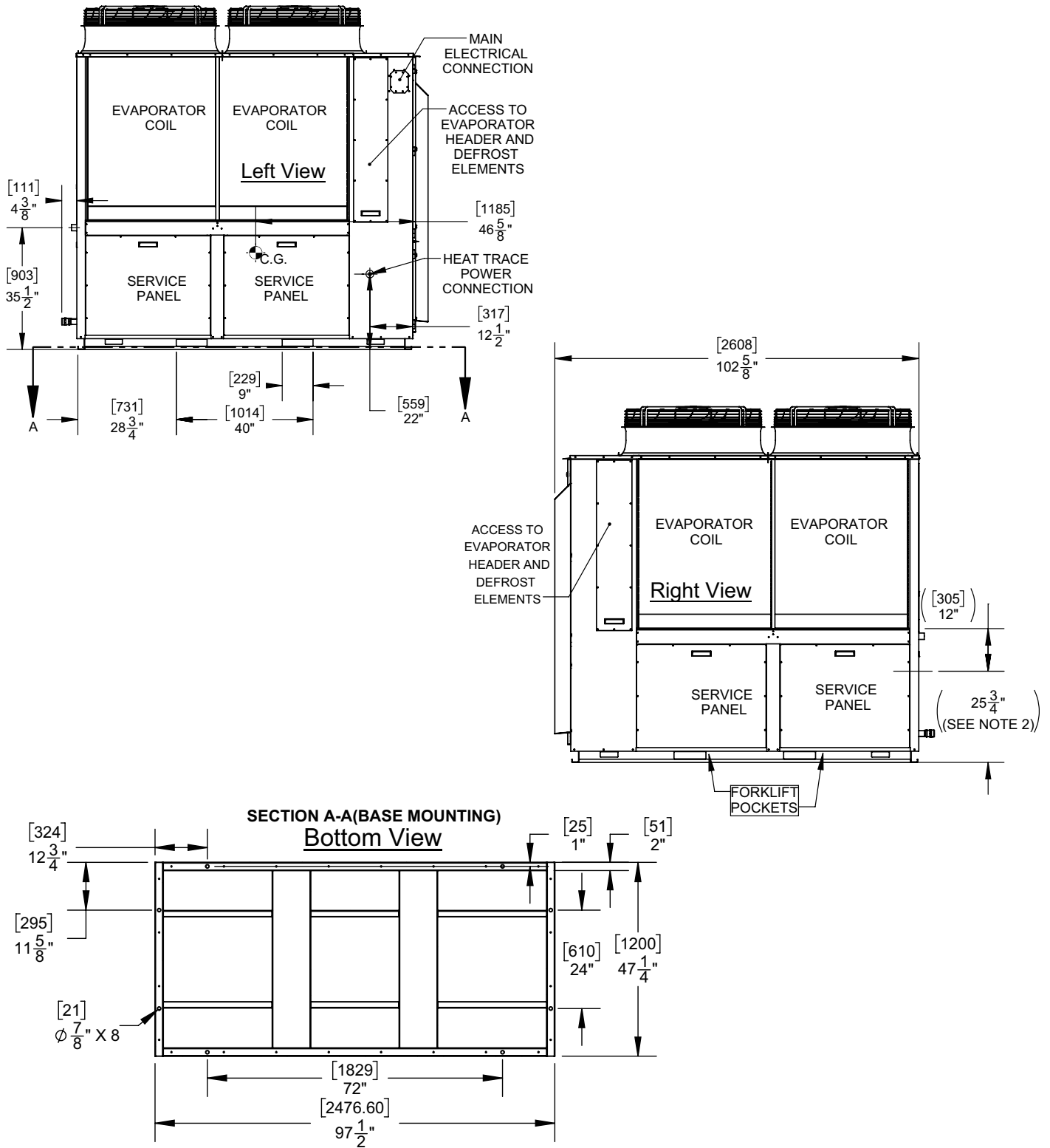
AIR SOURCE HEAT PUMP WATER HEATER  
(see Installation and Operation Manual)



- Notes:**
1. Dimensions are approximate and should not be used to "rough-in" equipment.
  2. Dimensions are subject to change without notice.
  3. All dimensions are in inches (mm).
  4. ● Symbol indicates center of gravity.

# SIMCOE 700 HEAT PUMP

AIR SOURCE HEAT PUMP WATER HEATER  
(see Installation and Operation Manual)

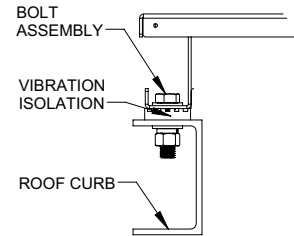
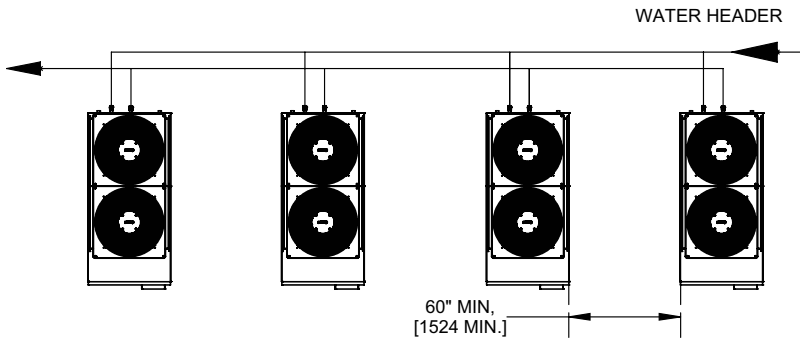


**Notes:**

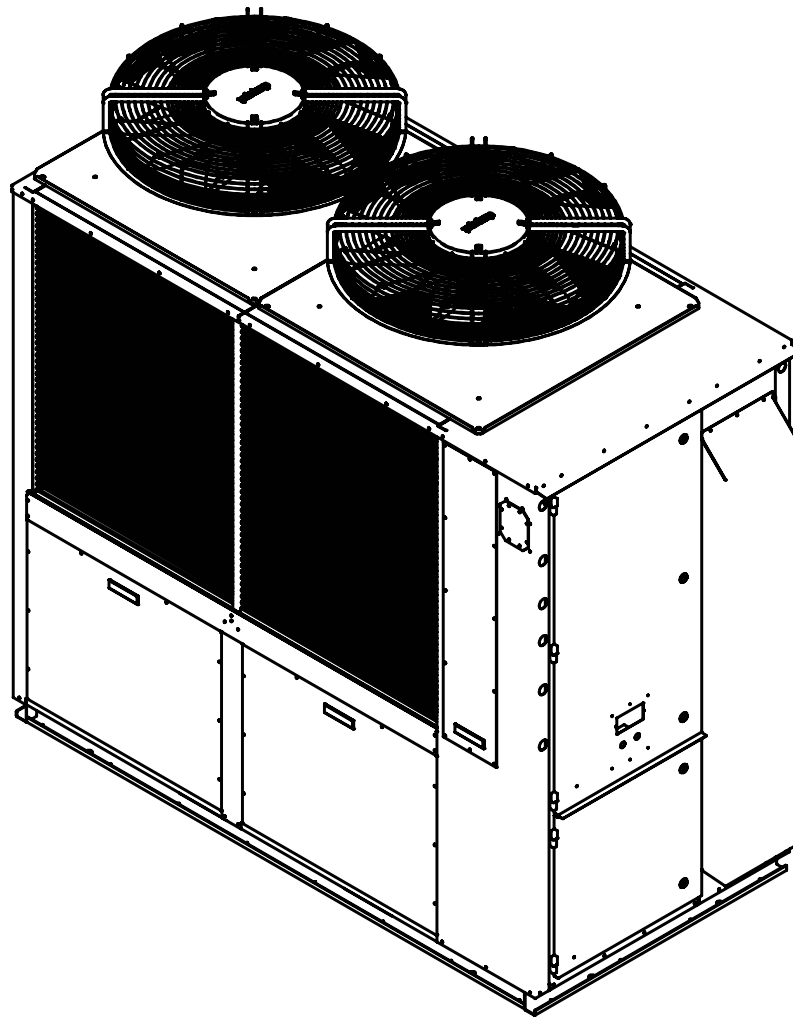
1. Dimensions are approximate and should not be used to "rough-in" equipment.
2. Dimensions are subject to change without notice.
3. All dimensions are in inches (mm).
4. ● Symbol indicates center of gravity.

# SIMCOE 700 HEAT PUMP


AIR SOURCE HEAT PUMP WATER HEATER  
(see Installation and Operation Manual)



NOTE: UNIT MUST BE BOLTED DOWN, MINIMUM 4 LOCATIONS.



#### Notes:

1. Dimensions are approximate and should not be used to "rough-in" equipment.
2. Dimensions are subject to change without notice.
3. All dimensions are in inches (mm).
4.  Symbol indicates center of gravity.

## CERTIFIED RATINGS & CAPACITIES

Capacity* (BTU/kW)	566,788/166	Usage	Outdoor
Performance* (COP)	4	Appliance Safety Certificaton	UL 60335-2-40 (ETL)
Sound** (dBA)	77	Low Lead Certification	NSF/ANSI/CAN 372 (CSA)
Water Heater Recovery Rate (GPH/LPH)	1361/5144	Water Volume (gal/liter)	3.2/12
SCCR (kA)	10	Shipping Weight (lb/kg)	3500 / 1588
		Operating Weight (lb/kg)	3350 / 1520

## MECHANICAL DATA

Refrigerant Type	R744 (CO2)
System Charge (lbs/kg)	42/19.1
Refrigerant Max Discharge Pressure (psi/bar)	1885/130
Refrigerant Max Suction Pressure (psi/bar)	1305/90

## ENVIRONMENTAL DATA

Maximum Altitude (ft/m)	6561/2000
Minimum Operating Ambient Temperature (f/c)	-15/-26
Maximum Operating Ambient Temperature (f/c)	115/46

## HYDRONIC DATA

Minimum Water Side Design Pressure (psi/bar)	25/1.72	Minimum Flow Rate (gpm/lps)	4/.25
Maximum Water Side Design Pressure (psi/bar)	150/10.34	Maximum Flow Rate (gpm/lps)	20/1.26
Minimum Entering Water Temperature (f/c)	40/4.44	Max Available External Piping Pressure Drop (ft-hd/kPa)	14/41.8
Maximum Entering Water Temperature (f/c)	110/43.3	Inlet Water Connection (mpt - in)	1-1/2
Minimum (LWT) Setpoint (f/c)	110/43.3	Outlet Water Connection (mpt - in)	1-1/2
Maximum (LWT) Setpoint (f/c)	171/77.2	Condensate Drain (fpt - in)	2 x 1 NPT female, 2 locations

## HEAT PUMP TRIM AND CONTROLS

Waterside Components	Refrigerant Side Components
Temperature Sensors	Semi-Hermetic Reciprocating Compressor (Dorin)
Double-Wall Gas Cooler	Safety PRV
ECM Pump (Taco)	High Pressure Switch
T&P Relief Valve (Watts)	Filter Dryer
Auto/Manual-Reset High Limit	High Pressure Valve
Flow Switch (SIKA)	Standby Expansion Tank
	EC Evaporator Fan

## ELECTRICAL DATA

MCA (A)			MOP (A)		
208-230/3/60	460V/3/60	575V/3/60	208-230/3/60	460V/3/60	575V/3/60
192	95	76	225	150	110

\*AHRI 1300 Standard, DOE test point of 70°F inlet and 120°F outlet water temperature at 80.6°F test air temperature.

\*\*Average of all sides - 1m from unit face, 1.5m from ground

REP FIRM	_____
SUBMITTED BY	_____
JOB NAME	_____
ARCHITECT	_____
ENGINEER	_____
CONTRACTOR	_____
DATE	_____

## SIMCOE 700 HEAT PUMP



A Division of Mestek, Inc.  
Westfield, MA 01085  
(833) 265-5371